

**askon**  
Since 1985



Redefining **Washroom Hygiene**  
Since 1985

IS 302-2-23:2009



CM/L: 7700229816



**INDIA**  
**DESIGN**  
**MARK**

**40 Years of Trust,  
Innovation & Excellence!**

# Table of Contents



**Hand Dryers**

04



**Urinal Sensors**

18



**2 in 1 Auto Tap**

22



**Sensor Taps**

24



**Washroom Panels**

28



**Auto Soap Dispensers**

31



**Manual Soap Dispensers**

35



**Shoe Polish Machines**

39



**Handicap Grab Bars**

41



**Paper Towel & Tissue Holders**

45



**Sanitary Napkin Dispenser**

48



**Baby Changing Stations**

52

# About Us

[www.askonhygiene.com](http://www.askonhygiene.com)

We have been manufacturing washroom hygiene accessories **Since 1985**.

Company was founded by **Dr. Shreyas Shah**, a medical practitioner, to cater to the hygiene requirements of clinics, hospitals and operation theatres.

Our products now find application in washrooms of all public places specially in the post covid era where hygiene is of paramount importance.

Since its establishment in 1985, our company has been an industry leader in manufacturing high-quality hand dryers and washroom accessories. Our core strength lies in our ability to manufacture our products, allowing us to maintain strict quality control and ensure the excellence that our brand represents.

In September 2024, we became the first company in India with ISI marked hand dryers pushing the envelope in terms of design and quality.

Over the span of three decades, our unyielding dedication and have propelled us to the forefront of the industry. Today, we proudly stand as one of India's leading manufacturers and suppliers of washroom hygiene products.

In a post-COVID world, clean public spaces are of paramount importance. Our adaptable products serve medical, commercial and hygiene needs across many sectors and industries.

Our legacy thrives on quality, excellence, and constantly innovating new products and incorporating the latest technologies to meet the evolving customer demands.



# Dual Jet **Hand Dryer** ---



## Dual Jet Hand Dryers



**ASH-MJ7-SS**

### Stainless Steel Dual Motor Dual Jet Hand Dryer

**Size** : H 694 x W 300 x D 195 mm

**Rated Power** : 1050W

**Motor Type** : Heavy Duty Brushed 30,000 RPM (2 nos)

**Material** : Stainless steel # 304 &  
Flame Retardant (FR) Polycarbonate

**Outer Cover** : SS # 304, 1.2mm Thick

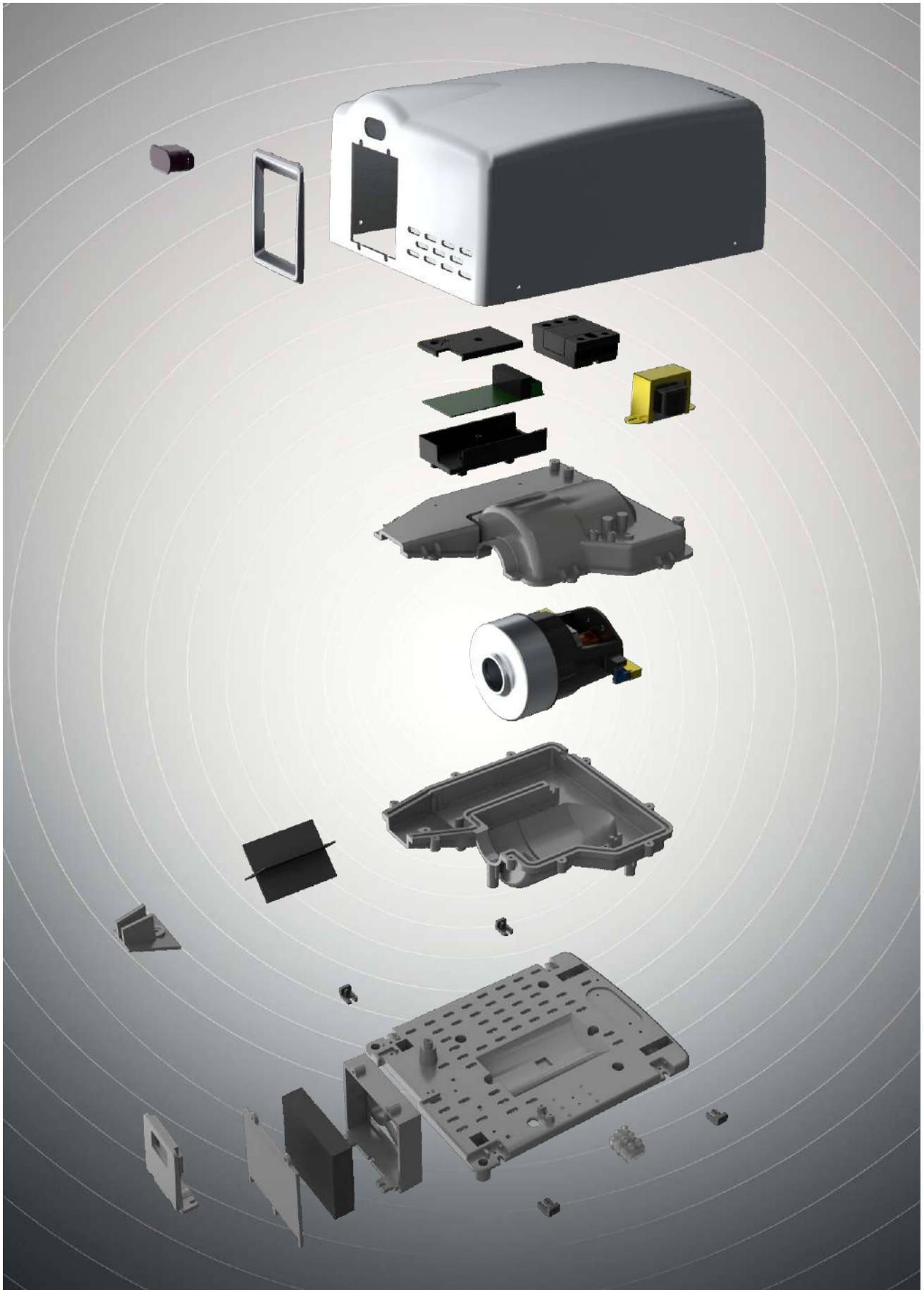
**Thermal cut-off and fuse** to prevent over heating of motor  
**45 sec Timer cut-off** and safety shut down  
feature to prevent misuse and vandalism

#### Salient Features

- Designed and Made-in-India
- Dual Jet hand dryer with touch-free operation
- Dual motor design with one motor powering each individual blade for fast hand drying
- Stainless steel # 304 and polycarbonate construction
- LED indicator lights
- Solid state relay for long operational life
- 45 seconds auto cut-off with Safety shutdown feature to prevent misuse and vandalism
- Hepa filter removes 99% germs and impurities from the intake air
- Motor speed control switch to adjust the motor speed as desired
- Provided with 15 Amps, 3 pin plug
- Water tray to prevent water dripping on floor



# InstaJet Pro **Hand Dryer** —————



# InstaJet Pro Hand Dryers



**INDIA  
DESIGN  
MARK**



**AS-45-G2-PRO-SB**

InstaJet Pro Hand Dryer  
Stainless Steel Brush Cover



**AS-45-G2-PRO-SM**

InstaJet Pro Hand Dryer  
Stainless Steel Mirror Cover



**AS-45-G2-PRO-PW**

InstaJet Pro Hand Dryer  
FR ABS Cover



**AS-45-G2-PRO-W**

InstaJet Pro Hand Dryer  
White Steel Cover

## Specifications

**Size** : H 270 x W 210 x D 133 mm

**Rated Power** : 1200W

**Motor Type** : Extreme Heavy Duty Brushed, 40,000 RPM

**Material** : Heat Resistant & Flame Retardant (FR) Polycarbonate

**Solid State Relay** for enhanced operating life

**Motor speed control switch** to adjust motor speed as desired

**Heater on/off switch** to reduced power consumption by 50%

**Thermal cut-off and fuse** to prevent over heating of motor and heating coil

**45 sec Timer cut-off** and safety shut down feature to prevent misuse and vandalism

The PRO Version of hand dryers feature Solid State Relays for extended operating life, Extreme Heavy Duty Motors for heavy traffic usage, motor speed control and heater ON/OFF switch and industry best warranties.

# InstaJet **Hand Dryer** ---





## InstaJet Hand Dryers



**AS-45-G2-SB**

InstaJet Hand Dryer  
Stainless Steel Brush Cover



**AS-45-G2-SM**

InstaJet Hand Dryer  
Stainless Steel Mirror Cover



**AS-45-G2-PW**

InstaJet Hand Dryer  
FR ABS Cover



**AS-45-G2-W**

InstaJet Hand Dryer  
White Steel Cover

### Specifications

**Size** : H 270 x W 210 x D 133 mm

**Rated Power** : 1025W

**Motor Type** : Heavy Duty Brushed, 20,000 RPM

**Material** : Heat Resistant & Flame Retardant (FR) Polycarbonate

**Thermal cut-off and fuse** to prevent over heating of motor and heating coil  
**45 sec Timer cut-off** and safety shut down feature to prevent misuse and vandalism

# Slim Jet **Hand Dryer** ---



## Slim Jet Hand Dryers



SlimJet Hand Dryers are available in stainless steel fusion covers and white FR ABS covers. The slim profile, clean design and low operating sound makes these hand dryers ideal for places where low noise levels are desirable.

# BIS CERTIFIED



### AS 55-IR (SF)

SlimJet Hand Dryer in  
Stainless Steel Fusion Cover

**Size** : H 266 x W 238 x D 113 mm

**Rated Power** : 800 W

**Motor Type** : Brushed Motor, 10000 RPM

**Material** : Polycarbonate

**Outer Cover** : SS # 304 + FR ABS

**Thermal cut-off and fuse** to prevent over heating of motor and heating coil

**45 sec Timer cut-off** and safety shut down feature to prevent misuse and vandalism



### AS 55-IR (W)

SlimJet hand dryer in White ABS

**Size** : H 266 x W 238 x D 113 mm

**Rated Power** : 800W

**Motor Type** : Brushed Motor, 10000 RPM

**Material** : Polycarbonate + ABS

**Outer Cover** : ABS

**Thermal cut-off and fuse** to prevent over heating of motor and heating coil

**45 sec Timer cut-off** and safety shut down feature to prevent misuse and vandalism

# BIS CERTIFIED

# Dura Slim **Hand Dryer** —————



## Dura Slim Hand Dryers



Made in India



HEPA Filter



Heavy Duty



Industry Best  
Warranty



Premium Quality

# BIS CERTIFIED

### AS-75-PRO-SB



Dura Slim **Pro** Hand Dryer  
Stainless Steel Brush Cover

**Size** : H 321 x W 279 x D 99.5 mm

**Rated Power** : 1200W

**Motor Type** : Extreme Heavy Duty  
Brushed, 40,000 RPM

**Material** : Heat Resistant  
& Flame Retardant (FR) Polycarbonate

**Outer Cover** : SS # 304, brush finish

**Solid State Relay** for enhanced operating life

**Motor speed control switch** to adjust motor  
speed as desired

**Heater on/off switch** to reduced power  
consumption by 50%

**Thermal cut-off and fuse** to prevent over  
heating of motor and heating coil

**45 sec Timer cut-off** and safety shut  
down feature to prevent misuse and vandalism

### AS-75-SB



Dura Slim Hand Dryer  
Stainless Steel Brush Cover

**Size** : H 321 x W 279 x D 99.5 mm

**Rated Power** : 1025W

**Motor Type** : Heavy Duty Brushed, 20,000 RPM

**Material** : Heat Resistant &  
Flame Retardant (FR) Polycarbonate

**Outer Cover** : SS # 304, brush finish

**Thermal cut-off and fuse** to prevent over  
heating of motor and heating coil

**45 sec Timer cut-off** and safety shut  
down feature to prevent misuse and vandalism

# BIS CERTIFIED

The PRO Version of hand dryers feature Solid State Relays for extended operating life, Extreme Heavy Duty Motors for heavy traffic usage, motor speed control and heater ON/OFF switch and industry best warranties.



# V Jet **Hand Dryer**

---



## V Jet Hand Dryers



The new V Jet Hand Dryer is a revolutionary new hand dryer which scrapes water from hands of the user and dries them in under 15 seconds. The V Jet Hand Dryer does not use a heating element and uses high speed blades of air to dry hands quickly.



**ASH-VJ-G2 (G)**

V Jet Hand Dryer  
in Grey with HEPA filters



**ASH-VJ-G2**

V Jet Hand Dryer  
in White with HEPA filters

### Specifications :

**Size** : H 280 x W 210 x D 143 mm

**Rated Power** : 525 W

**Motor Type** : Heavy Duty Brushed 30,000 RPM

**Material** : Heat Resistant & Flame Retardant (FR) Polycarbonate

**Outer Cover** : Polycarbonate in metallic grey

**Solid State Relay** for enhanced operating life

**50% Less operating noise** as compared to other jet hand dryers

**Low power consumption** as it does not feature heating coil

**Hepa filter** removes 99% germs and impurities from the intake air

**Thermal cut-off and fuse** to prevent over heating of motor

**45 sec Timer cut-off** and safety shut down feature to prevent misuse and vandalism

# EcoFast **Hand Dryer** ---





Made in India

Industry Best  
Warranty

Premium Quality

**Ecofast hand dryer** is a small compact hand dryer ideally suited for small offices, restaurants, cafes and other low to medium traffic facilities. The compact form factor makes it easy to fit into small washrooms.

The hand dryer boasts good air flow in spite of its small size due to a high speed 6500 RPM DC motor.



**AS-10-IR (W)**

Eco Fast Hand Dryer  
in White ABS

### Specifications :

**Size** : H 242 x W 165 x D 160 mm

**Rated Power** : 750 W

**Motor Type** : Brushed DC Motor, 6500 RPM

**Material** : Polycarbonate + ABS

**Outer Cover** : ABS

- **Thermal cut-off and fuse** to prevent over heating of motor and heating coil
- **Compact design and low operating noise**
- **45 sec Timer cut-off** and safety shut down feature to prevent misuse and vandalism

## Concealed **Urinal Sensor**

---





## Concealed Urinal Sensor



**AS 05-IR (E) / (B)**



**AS 06-IR (E) / (B)**



**AS 07-IR (E) / (B)**

### Specifications :

**Inlet and outlet connections :** 1/2" B.S.P

**Power :** Battery Version (4 AA Type batteries, 6 VDC)

Electrical version (230V, 50Hz)

**Material :** Polycarbonate concealed box, aluminium die casting front plate, brass flow control valve, brass solenoid valve

**Installation type :** Concealed

- All components located inside the concealed box and are easily accessible from front for easy maintenance.
- Sensing range and flushing time can be adjusted with remote.
- Non-corrosive & highly durable polycarbonate concealed box with protective cover with 'Min-Max' wall thickness guidance for installation.
- Integrated sensor and control circuit is completely sealed with resin to prevent damage by moisture.
- Brass water flow regulator valve allows water flow to be adjusted & turned-off as desired.
- Front plate dimensions : **AS 05-IR** : W 150 x H 150 x D 11 mm  
**AS 06-IR & AS 07-IR** : W 150 x H 150 x D 8 mm

# Wall Mount **Urinal Sensor**

---



## Wall Mount Urinal Sensor



### ASU-30B

Wall Mounted Urinal Sensor

**Size :** H 170 x W 55 x D 90 mm

**Inlet and outlet connections :** 1/2" B.S.P

**Power :** 4 AAA Alkaline batteries

**Flow control valve and filter :** Provided

**Material :** Chrome plated brass

**Installation type :** Wall mount



### ASU-40B

Wall Mounted Urinal Sensor

**Size :** H 143 x W 99 x D 52 mm

**Material :** Chrome plated brass

**Power :** 4 AAA Alkaline batteries

**Flow control valve and filter :** Provided

**Inlet and outlet connections :** 1/2" B.S.P

**Installation type :** Wall mount



### ASU-50B

Wall Mounted Urinal Sensor

**Size :** H 162 x W 109 x D 50 mm

**Material :** ABS spray painted in metallic grey

**Power :** 4 AAA Alkaline batteries

**Flow control valve and filter :** Provided

**Inlet and outlet connections :** 1/2" B.S.P

**Installation type :** Wall mount



## 2 in 1 Sensor Tap + Soap Dispensers

---



## 2 in 1 Sensor Tap + Soap Dispensers



Made in India



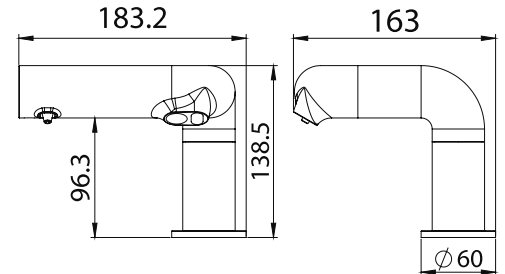
Industry Best  
Warranty



Premium Quality



### AS-2IN1-SBM



### 2 in 1 Sensor Tap + Soap Dispenser

**Operation** : Automatic Sensor Operated

**Power** : Battery Version (4 D Type batteries) Electrical version (230V, 50Hz)

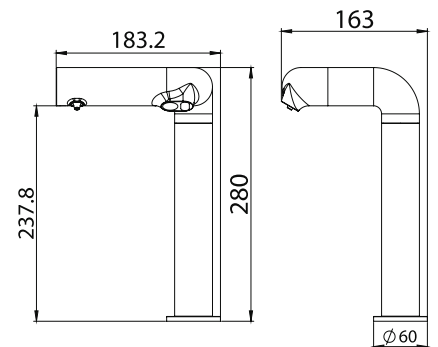
**Tank Capacity** : 1500ml

**Material** : Chrome plated brass body, ABS for control box

**Installation** : Counter mount, install control box and soap container below counter



### AS-2IN1-LBM



### 2 in 1 Sensor Tap + Soap Dispenser (with extension for counter top basin)

**Operation** : Automatic Sensor Operated

**Power** : Battery Version (4 D Type batteries) Electrical version (230V, 50Hz)

**Tank Capacity** : 1500ml

**Material** : Chrome plated brass body, ABS for control box

**Installation** : Counter mount, install control box and soap container below counter

\*All dimensions are in mm

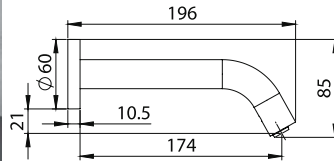


# Sensor Tap

---



## Sensor Taps



### ASF-03 (E)/(B)

Wall Mounted Sensor Tap

**Operation :** Automatic Sensor Operated

**Power :** Battery Version (4 AA Type batteries) Electrical version (230V, 50Hz)

**Material :** Chrome plated brass body, control box in ABS

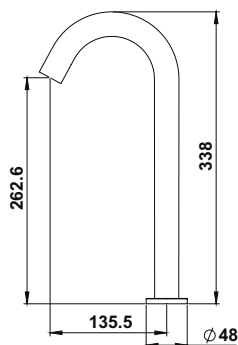
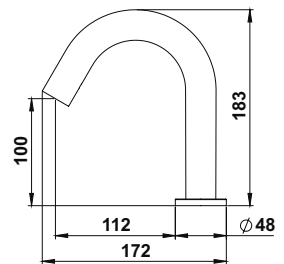
### ASF 04 (E)/(B)

Sensor Tap

**Operation :** Automatic Sensor Operated

**Power :** Battery Version (4 AA Type batteries) Electrical version (230V, 50Hz)

**Material :** Chrome plated brass body, control box in ABS



### ASF 05 (E)/(B)

Tall Sensor Tap  
(for counter top basin)

**Operation :** Automatic Sensor Operated

**Power :** Battery Version (4 AA Type batteries) Electrical version (230V, 50Hz)

**Material :** Chrome plated brass body, control box in ABS

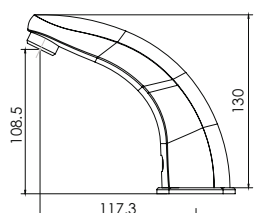
### ASF 50 (E)/(B)

Sensor Tap

**Operation :** Automatic Sensor Operated

**Power :** Battery Version (4 AA Type batteries) Electrical version (230V, 50Hz)

**Material :** Chrome plated brass body, control box in ABS



Note: suffix (E) is electrical version and (B) for battery operated

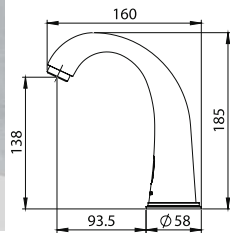
\*All dimensions are in mm

# Sensor Taps

---



## Sensor Taps



### ASF-70 (E)/(B)

Sensor Tap

**Operation :** Automatic Sensor Operated

**Power :** Battery Version (4 AA Type batteries) Electrical version (230V, 50Hz)

**Material :** Chrome plated brass body, control box in ABS

### ASF-80 (E)/(B)

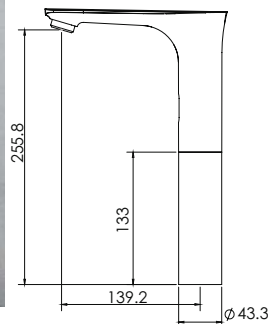
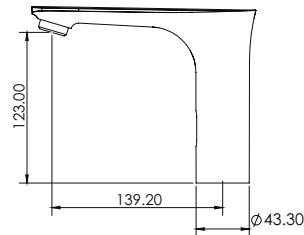
Sensor Tap

**Size:** H 145 mm x W 185 mm

**Operation :** Automatic Sensor Operated

**Power :** Battery Version (4 AA Type batteries) Electrical version (230V, 50Hz)

**Material :** Chrome plated brass body, control box in ABS



### ASF-80EXT (E)/(B)

Tall Sensor Tap  
(for counter top basin)

**Size:** H 280 mm x W 185 mm

**Operation :** Automatic Sensor Operated

**Power :** Battery Version (4 AA Type batteries) Electrical version (230V, 50Hz)

**Material :** Chrome plated brass body, control box in ABS

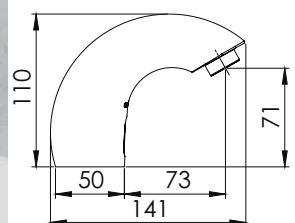
### ASF 06 (E)/(B)

Sensor Tap

**Operation :** Automatic Sensor Operated

**Power :** Battery Version (4 AA Type batteries) Electrical version (230V, 50Hz)

**Material :** Chrome plated brass body, control box in ABS



# Washroom Panels

---





## Multipurpose Washroom Panels



Made in India



Industry Best  
Warranty



Premium Quality

### ASM-25P



2 in 1 Stainless Steel Recessed Panel  
Paper Towel Dispenser + Waste Bin

**Size :** H 1300 x W 370 x D 160 mm

**Material :** Stainless steel # 304 grade,  
brushed (satin) finish, 22 gauge (0.8 mm)

**Installation type :** Concealed

- Durable spot welded construction, common key for two tumbler locks
- Paper towel dispenser holds 800 multi fold or 600 c-fold paper towels
- Doors equipped with heavy duty hinges
- Removable stainless steel waste container having capacity 23 ltrs

### ASM-25T



3 in 1 Stainless Steel Recessed Panel  
Paper Towel + Hand Dryer + Waste Bin

**Size :** H 1650 x W 370 x D 160 mm

**Material :** Stainless steel # 304 grade,  
brushed (satin) finish, 22 gauge (0.8 mm)

**Installation type :** Concealed

- Paper towel dispenser holds 800 multi fold or 600 c-fold paper towels
- Removable stainless steel waste container having capacity of 23 liters
- Stainless steel hand dryer with brush finish

**Voltage :** 230V - 50Hz

**Power :** 1200 W

**Air speed :** 80 m/s

- High Speed brush motor, 25,000 RPM  
Motor equipped with thermal cut-off &  
heating coil equipped with thermal cut-off  
and thermal fuse for overheating protection

## Multipurpose Washroom Panels



Made in India



Industry Best  
Warranty



Premium Quality

### ASM-45PW



2-in-1 Stainless Steel Wall Mount Panel  
Paper towel dispenser + waste bin

**Size** : 1400 x 360 x 105 mm

**Material** : Stainless steel # 304 grade,  
brushed (satin) finish, 22 gauge (0.8 mm)

**Installation type** : Wall mount

- Paper towel dispenser holds 800 multi fold or 600 c-fold paper towels
- Doors equipped with heavy duty hinges
- Removable stainless steel waste container having capacity 35 liters

### ASM-55-ARTD



2-in-1 Stainless Steel Recessed Panel  
Automatic Paper towel dispenser + waste bin

**Size** : H 1352 x W 354 x D 230 mm

**Material** : Stainless steel # 304 grade,  
brushed (satin) finish, 22 gauge (0.8 mm)

**Installation type** : Concealed

**Paper Towel Dispenser holds**: Max Roll

**Dimensions**: Dia 210 x Width 210 mm

- For non-perforated paper towels
- Doors equipped with heavy duty hinges
- Removable stainless steel waste container having capacity 30 liters

**Power** : Electrically Operated: 6V AC/DC adaptor  
Battery Operated : 4 nos D type alkaline batteries

# Automatic Soap Dispensers

---



## Automatic Soap / Sanitizer Dispensers



### ASD-140AD (Drop) / ASD-140AS (Spray)

Stainless Steel Automatic Liquid Soap / Sanitizer Dispenser

**Size :** H 236 x W 140 x D 102 mm

**Power :** 4 'AA' size alkaline batteries

**Tank Capacity :** 1100ml

**Material :** Stainless Steel # 304 cover, Other parts in ABS Plastic

**Drop type** (for liquid soap & sanitizer),

**Spray version** (for liquid sanitizer only) equipped with lock and key

### ASD-110AD (Drop) / ASD-110AS (Spray)

Automatic Liquid Soap / Sanitizer Dispenser

**Size :** H 235 x W 140 x D 107 mm

**Power :** 4 'AA' size alkaline batteries

**Tank Capacity :** 1100ml

**Material :** White ABS

**Drop type** (for liquid soap & sanitizer),

**Spray version** (for liquid sanitizer only) equipped with lock and key



### ASD-130AD (Drop) / ASD-130AS (Spray)

Automatic Liquid Soap / Sanitizer Dispenser

**Size :** H 276 x W 151 x D 110 mm

**Power :** 4 'C' size alkaline batteries, (not included) option of using adaptor (6V, 1A)

**Tank Capacity :** 1200ml

**Material :** White ABS

**Drop type** (for liquid soap & sanitizer),

**Spray version** (for liquid sanitizer only) equipped with lock and key



### ASD-160AD

Automatic Stainless steel Soap Dispenser

**Volume:** 700 ml

**Size:** H 215 x W 100 x D 110 mm

**Material:** Outer cover made from stainless steel #304, brush finish

Provided with lock and key

Dispenses liquid soap and hand sanitizers



# Automatic Soap Dispensers

---





## Automatic Soap Dispensers



### ASD-BM-01C (Drop) / ASD-BM-01CF (Foam)

Behind Mirror Soap Dispenser

**Operation :** Automatic Sensor Operated

**Power :** Battery Operated Version (4 D Type batteries) AC version (230V, 50Hz)

**Tank Capacity :** 1000ml

**Material :** Chrome plated brass outlet spout, ABS plastic for control box, HDPE for soap bottle, SS # 304 mounting plate

### ASD-210AS

Automatic Sanitizer Dispenser

**Size :** H 320 x W 185 x D 130 mm

**Power :** 230 VAC, 50Hz (Adaptor Provided)

**Capacity :** 2100ml

**Material :** White ABS

Adjustable dispensing volume & nozzle angle

**Type :** Spray version (for liquid sanitizer only), equipped with lock and key.



### ASD-CM-02C (Drop) / ASD-CM-02CF (Foam)

Counter Mounted Soap Dispenser

**Operation :** Automatic Sensor Operated

**Power :** Battery Operated Version (4 D Type batteries) AC version (230V, 50Hz)

**Tank Capacity :** 1000ml

**Material :** Chrome plated brass body, ABS for control box

\*Available with extension for counter top basin



### ASD-CM-03C (Drop) / ASD-CM-03CF (Foam)

Counter Mounted Soap Dispenser

**Operation :** Automatic Sensor Operated

**Power :** Battery Operated Version (4 D Type batteries) AC version (230V, 50Hz)

**Tank Capacity :** 1000ml

**Material :** Chrome plated brass body, ABS for control box

\*Available with extension for counter top basin



# Manual Soap Dispensers

---



## Manual Soap Dispensers



### AS-CM

Counter Mounted Liquid Soap Dispenser

**Size :** H 260 x W 120 x D 110 mm

**Tank Capacity :** 600ml

**Material :** Piston, spout & top cap made from Stainless Steel # 304, other parts in plastic

### ASD-36W

Liquid Soap Dispenser

**Size :** H 190 x W 80 x D 82 mm

**Tank Capacity :** 360ml

**Outer cover :** White ABS

Viewing window to check liquid level

**Type :** Dispenses liquid soap and hand sanitizer



### AS-SS(N)

Stainless Steel Liquid Soap / Sanitizer Dispenser

**Size :** H 200 x W 120 x D 140 mm

**Tank Capacity :** 1500ml

**Material :** Stainless Steel #304

Viewing window to check liquid level

Pump easily replaceable, equipped with lock and key

Dispenses liquid soap and hand sanitizers



### AS-SV

Stainless Steel Liquid Soap / Sanitizer Dispenser

**Size :** H 195 x W 115 x D 85 mm

**Tank Capacity :** 1000ml

**Material :** Stainless Steel #304

Viewing window to check liquid level

Pump easily replaceable, equipped with lock and key

Dispenses liquid soap and hand sanitizers



# Manual Soap Dispensers

---



## Manual Soap Dispensers



### ASD-50W

ABS Plastic Wall Mount Soap Dispenser

**Size :** H 190 x W 80 x D 82 mm

**Tank Capacity :** 500 ml

**Material :** ABS plastic, white

Viewing window to check liquid level

Dispenses liquid soap and hand sanitizers

### ASD-12D (Drop) / ASD-12F (Foam)

Manual Soap / Sanitizer Dispenser

**Volume:** 1200 ml

**Size:** H 266 x W 137 x D 108 mm

**Material:** ABS & PP

Viewing window to check liquid level

Dispenses liquid soap and sanitizers,  
equipped with lock and key, pump  
easily replaceable



### ASD-01SBM

Wall Mount stainless steel  
Soap dispenser

**Size :** H 310 x W 102 x D 93 mm

**Tank Capacity :** 1000ml

**Outer cover :** stainless steel #304

Brush finish

**Type :** Liquid/gel

**Installation:** Wall Mounted

Viewing window to check liquid level

Dispenses liquid soap and hand sanitizers





# Shoe Polish Machine

---



## Shoe Polish Machine



Sensor Operated



Heavy Duty



Made in India



Industry Best  
Warranty



Premium Quality

### ASM-50T

Automatic Shoe Polish Machine  
With Stainless Steel Support Bar

**Operation :** Capacitive touch button

**Size :** H 265 x W 390 x 220 mm

**Power :** 230 VAC, 50Hz, Single Phase

**Motor Type :** 1400 RPM Motor 1/8 HP

**Material :** Stainless steel # 304  
support bar, steel & stainless steel  
construction for enhanced durability



### ASM-60

Automatic Shoe Shine Machine

**Operation :** Automatic with IR Sensors

**Size :** H 245 x W 490 x 165 mm

**Power :** 230 VAC, 50Hz

**Motor Type :** 1400 RPM, 1/8 HP

**Material :** steel & stainless steel  
construction for enhanced durability



# Handicap Grab Bars

---



## Handicap Grab Bars

### AS-GB-LTR-600

L Shaped Towards Right Grab Bar

**Material :** Stainless Steel # 304, Brush Finish

**Outer Diameter :** 32 mm

**Thickness :** 1.2 mm

**Size :** 600 x 600 mm



### AS-GB-LTL-600

L Shaped Towards Left Grab Bar

**Material :** Stainless Steel # 304, Brush Finish

**Outer Diameter :** 32 mm

**Thickness :** 1.2 mm

**Size :** 600 x 600 mm



### AS-SGB-800

Swing Grab Bar

**Material :** Stainless Steel # 304, Brush Finish

**Outer Diameter :** 32 mm

**Thickness :** 1.2 mm

**Length :** 800 mm

**Base size :** 300 x 100 x 3 mm



# Handicap Grab Bars

---





## Handicap Grab Bars



Industry Best  
Warranty

Premium Quality



### AS-GB-600

Straight Grab Bar (600mm)

**Material :** Stainless Steel # 304, Brush Finish

**Outer Diameter :** 32 mm

**Thickness :** 1.2 mm

**Length :** 600 mm

### AS-GB-800

Straight Grab Bar (800mm)

**Material :** Stainless Steel # 304, Brush Finish

**Outer Diameter :** 32 mm

**Thickness :** 1.2 mm

**Length :** 800 mm



### AS-GB-US2

Stainless Steel U Shaped Grab bar (Set of 2)

**Material :** Stainless Steel # 304, Brush Finish

**Outer Diameter :** 32 mm

**Thickness :** 1.2 mm



### AS-GB-URI

Stainless Steel Grab Bars for Urinal

**Material :** Stainless Steel # 304, Brush Finish

**Outer Diameter :** 32 mm

**Thickness :** 1.2 mm



# Paper Towel, Tissue & Sanitary Dispenser



# Paper Towel Dispensers



## AST-30SL

Stainless Steel Paper Towel Dispenser  
(Large)

**Size** : H 369 x W 280 x D 102 mm

Equipped with lock and key

**Material** : S.S. # 304, Brush finish

**Capacity** : 450 C - fold or 600 multi-fold  
paper towels

## AST-30SS

Stainless Steel Paper Towel Dispenser  
(Small)

**Size** : H 260 x W 280 x D 102 mm

Equipped with lock and key

**Material** : S.S. # 304, Brush finish

**Capacity** : 250 C - fold or 300  
multi-fold paper towels.



## AST-40SL

Stainless Steel Paper towel dispenser  
(Large)

**Size** : W 268 x D 110 x H 370 mm

Equipped with lock and key

**Material** : S.S. # 304, Brush finish

**Capacity** : 500 N / Z fold paper towels



## AST-25D

Concealed Stainless Steel  
Paper towel dispenser

**Material** : Stainless Steel # 304, matt finish,  
0.8 mm thickness

Unit fitted with lock | Recessed type

**Dimensions** : H 440 x W 300 x D 115 mm

Dispenses standard sizes of tissue papers



# Paper Towel Dispensers



## AST-40MA

Manual auto cut paper towel dispenser

**Material :** PP & ABS Plastic

Manual auto cut roll towel dispenser

Unit fitted with lock | Wall mount type

**Dimensions :** H 363 x W 290 x D 220 mm

**Max. roll dimension :** Dia 200 x W 210 mm

## AST-40SA

Sensor auto cut paper towel dispenser

**Material :** PP & ABS Plastic

Sensor auto cut roll towel dispenser

Unit fitted with lock | Wall mount type

**Dimensions :** H 363 x W 290 x D 220 mm

**Max. roll dimension :** Dia 200 x W 210 mm



## AST-50MA-SS

Stainless steel manual auto cut paper towel dispenser

**Material:** Stainless Steel #304

Unit fitted with lock | Wall Mount Type

**Size:** H 362 mm x W 301 x D 222

**Max. roll dimension** 210 x 210 mm

**Sheet length :** 240 mm (+-5mm)



## AST-50SA-SS

Stainless steel sensor auto cut paper towel dispenser

**Material:** Stainless Steel #304

Unit fitted with lock | Wall Mount Type

**Size:** H 400 mm x W 301 x D 222

**Max. roll dimension** 210 x 210 mm

Adjustable sheet length (20/30/40 cm)

**Power :** Electrically operated: 6V AC/DC adaptor

Battery operated : 4 nos D type alkaline batteries



# Paper Towel Dispensers



## AST-40PS

Paper towel dispenser in white ABS

**Material :** ABS Plastic, white

**Dimensions :** H 220 x W 270 x D 95 mm

Dispenses all standard sizes of paper towels

**Installation:** Wall Mounted

**Viewing Window:** Provided

## AST-50PL

Paper towel dispenser in white ABS

**Material:** PP & ABS Plastic

**Dimensions :** H 363 x W 283 x D 100 mm

Dispenses all standard sizes of paper towels

**Installation:** Wall Mounted

**Viewing Window:** Provided

**Lock & Key:** Yes



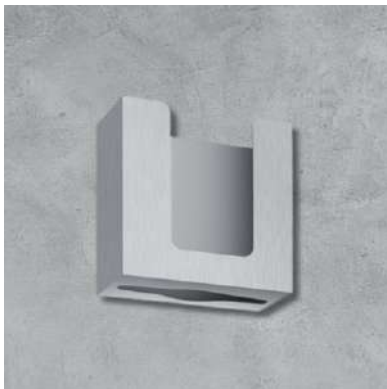
## AST-30BM-1

Behind mirror paper towel dispenser

**Material :** Stainless Steel # 304, brush finish  
Behind mirror installation

**Dimensions :** H 260 x W 240 x D 105 mm

Dispenses all standard sizes of  
paper towels, front loading of paper towels



## AST-30BM-2

Behind mirror paper towel dispenser

**Material :** Stainless Steel # 304, brush finish  
Behind mirror installation

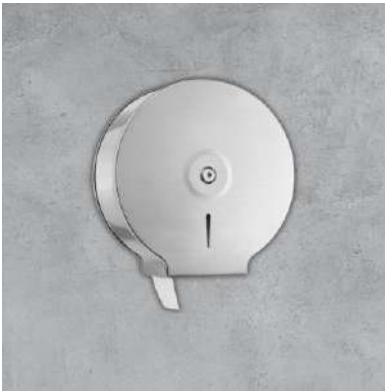
**Dimensions:** H 330 x W 290 x D 150 mm

Dispenses all standard sizes of  
paper towels, bottom loading of paper towels





# Tissue Roll Holder & Sanitary Napkin Dispensers



## AST-30SR

Stainless steel jumbo roll tissue dispenser

**Material:** Stainless Steel # 304, brush finish

Unit fitted with lock | Wall mount

**Dimensions :** Dia 273 x D 120 mm

Dispenses all jumbo tissue rolls of standard sizes

## AST-40SR

Stainless steel jumbo roll tissue dispenser

**Material :** Stainless Steel # 304, brush finish

Unit fitted with lock | Wall mount

**Dimensions :** Dia 264 x D 120 mm

Dispenses all jumbo tissue rolls of standard sizes



## AST-01SND

Large capacity sanitary napkin and tampon dispenser

**Material :** Stainless Steel # 304, brush finish

Unit fitted with lock | Wall mount

**Dimensions :** H 313 x W 201 x D 128 mm

Dispenses all standard sizes of sanitary napkins and tampons

**Capacity :** 50 pads and tampons each



## AST-02SND

Stainless steel sanitary napkin dispenser

**Material :** Stainless Steel # 304, brush finish

Unit fitted with lock | Wall mount

**Dimensions :** H 250 x W 121 x D 108 mm

Dispenses all standard sizes of sanitary napkins

**Capacity :** 25 pads



# Seat Cover Dispenser & Toilet Roll Holder



## AST-01SCD

Stainless Steel Seat Cover Dispenser

**Material:** Stainless Steel # 304

**Installation:** Wall Mounted

**Dimensions:** H 300 x W 400 x D 50 mm  
brush finish

## AST-01SS

Stainless steel tissue roll holder

**Material:** Stainless Steel # 304

**Installation:** Wall Mounted Matt Finish

Single roll holder with flap

Dispenses all standard types of tissue rolls



## AST-02SS

Stainless steel tissue roll holder

**Material :** Stainless Steel # 304, brush finish

Wall mount | Single roll holder with flap

**Dimensions :** H 85 x W 180 x D 90 mm

Dispenses all standard types of tissue rolls



## AST-03SS

Stainless steel tissue roll holder

**Material:** Stainless Steel # 304

**Size:** H 100 x W 125 x D 95mm

**Installation:** Wall Mounted

Dispenses all standard sizes of tissue rolls



## Toilet Roll Holder & Waste Chute



### AST-04SS

Dual stainless steel tissue roll holder

**Material :** Stainless Steel # 304, brush finish

**Installation:** Wall Mounted

**Dimensions :** H 250 x W 121 x D 108 mm

Dispenses all standard sizes of tissue rolls

### AST-05SS

Stainless steel tissue roll holder (recessed)

**Material:** Stainless Steel # 304

**Size:** H 165 x W 165 x D 75 mm

**Installation:** Recessed

Dispenses all standard sizes of tissue rolls



### AST-01-WC-C

Stainless Steel circular waste chute

**Material:** Stainless Steel # 304

**Size:** Height 130, OD 155, ID 135 mm



## Baby Diaper Changing Station



### AS-BCS-03-P

Baby Diaper Changing Station  
Wall Mount

**Size :** Open L 855 x H 560 x D 495 mm

**Closed :** L 855 x H 560 x D 107mm

**Unit weight :** 12 Kg

**Material :** HDPE

**Maximum loads :** 30kgs

### AS-BCS-02-RSS

Stainless Steel Wall Mount Recessed  
Baby Diaper Changing station

**Size :** Open L 940 x H 585 x D 495 mm

**Closed :** L 940 x H 585 x D 104 mm

**Unit weight :** 22 Kg

**Material :** Stainless Steel + HDPE

**Maximum loads :** 30kgs



### AS-BCS-01-SS

Stainless Steel Wall Mount  
Baby Diaper Changing Station

**Size :** Open L 940 x H 520 x D 495 mm

**Closed :** L 940 x H 520 x D 104 mm

**Unit weight :** 23 Kg

**Material :** Stainless Steel + HDPE

**Maximum loads :** 30kgs





# Our Privileged Clients

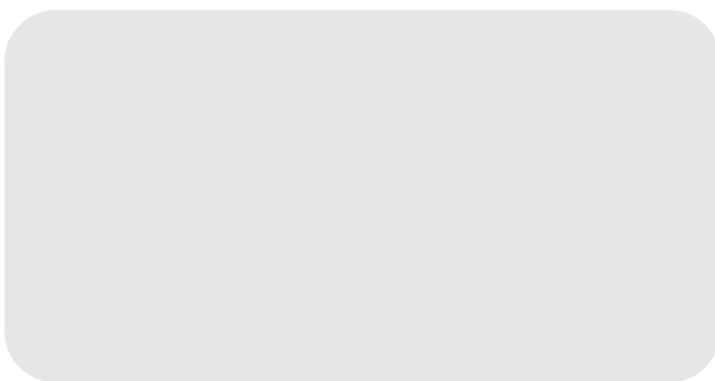
**askon**  
Since 1985





Get in **touch** with us!



Catalog



Website



Premium  
Quality



35+ Years  
of Experience



Trusted  
Brand



Range of Made  
in India Products